



37 Meadowgate Drive

, Hartlepool, TS26 0RH

Offers Over £450,000



Igomove are honoured to present to the market this phenomenal five bedroom detached house in a superb location, situated on a small development with desirable schools and beautiful parks within walking distance, enhanced and extended beyond recognition from its original build, this magnificent abode offers a plethora of key desirable features and several welcome and unique additions which include; five spacious bedrooms (master and ground floor bedroom both benefiting from en suite facilities), porch entrance, inviting entrance hall with bespoke oak staircase, guest cloakroom, fabulous lounge, magnificent open concept kitchen / diner/ living/ family room, useful utility room, several storage rooms, changing room, sauna and an awe inspiring night club/ home entertainment space, with extensive driveway, immaculate low maintenance contemporary landscaped gardens, (rear is south west facing), Finnish garden room, anthracite grey uPVC double glazing, gas central heating, contemporary interior doors, impeccable decor throughout, fitted blinds, high end fixtures and fittings throughout, additional upgrades too numerous to mention, freehold. Council tax band D



Excellent cul de sac position, impeccable frontage with kerb appeal, anthracite windows, extensive imprinted driveway for four vehicles, impressive double composite anthracite door porch entry.

Inviting hallway with stairs to the first-floor accommodation, bespoke recently installed oak and glass staircase, beautiful flooring, pristine decor.

Guest cloakroom comprising close coupled WC and corner wall mounted wash basin in white porcelain with chrome fittings and stylish wall and floor coverings.

Bedroom five (converted from the garage) is a well proportioned double room with front elevation window and access to the guest cloakroom to utilise as an en-suite.

Splendid lounge of capacious proportions with window to the front of the property, beautiful decor, decorative coving, contemporary media wall with illuminated shelving, wall inset log effect living flame fire, doors opening into;

Breath-taking open concept Kitchen/ dining/ family room/ lounge is a chefs delight and is ideal for family gatherings and dinner parties with twin sets of bi fold doors seamlessly joining the indoor and outdoor space, the kitchen is fitted with a plethora of sleek high gloss two tone wall, base, larder and drawer cabinetry with cabinet lighting, solid countertops, complemented by a multitude of integrated appliances including; oven x2, gas hob, extractor, microwave x2, dishwasher, fridge freezer, 2x wine coolers, wine racks, fabulous huge central breakfast island with seating area for 8 persons, inset sink with chrome mixer swivel tap, beautiful tiled flooring ample space for both lounge and dining furnishings, four x skylights flooding the room with natural light, impeccable decor, recessed spotlights, designer inspired column radiators.

Useful utility room with plumbing for washing machine, space for tumble dryer and further appliances, stainless sink with chrome mixer tap, cabinetry in keeping with the kitchen and space to perform laundry duties.

Changing room for use with the sauna/ hot tub, ample storage.

Sauna with seating for several people, in immaculate condition.

The jewel in the crown of this stunning property is the utterly unique, fully sound proofed, night club/ home entertaining room, a vast space to host parties and events fitted with a fully kitted out bar featuring concealed lighting, bespoke wall panelling, decorative coving, seating booth and also benefitting from a further guest cloakroom which comprises close coupled WC and wall mounted wash basin with contemporary panelling, stylish tiled flooring and with bi food doors opening to the front elevation and with a further access door into the rear garden this offers a self contained entertainment facility whereby guests have no need to venture into the main residence.

To the first floor landing there is a fitted storage cupboard plus access to;

Huge master bedroom with window to the front elevation, extensive fitted wardrobes, concealed lighting, feature lighting above the bed, twin ceiling bedside lighting, tasteful decor, with access to;

Stylish en suite shower room comprising oversized shower enclosure, close coupled WC and pedestal wash basin, stylish tiling.

Bedroom two is a very large double located to the front of the property with fitted wardrobes, superb decor.

Bedroom three is also of double proportions with rear elevation window, lovely decor.

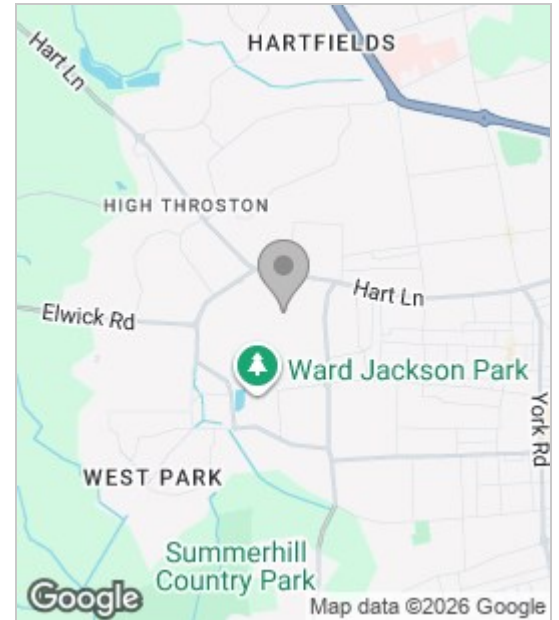
Bedroom four is a further double situated to the rear with fitted wardrobes, delightful decor.

The superb family bathroom comprises bath, close coupled WC and pedestal wash basin, recessed spotlights, chrome heated towel radiator, fully tiled to walls and floor.

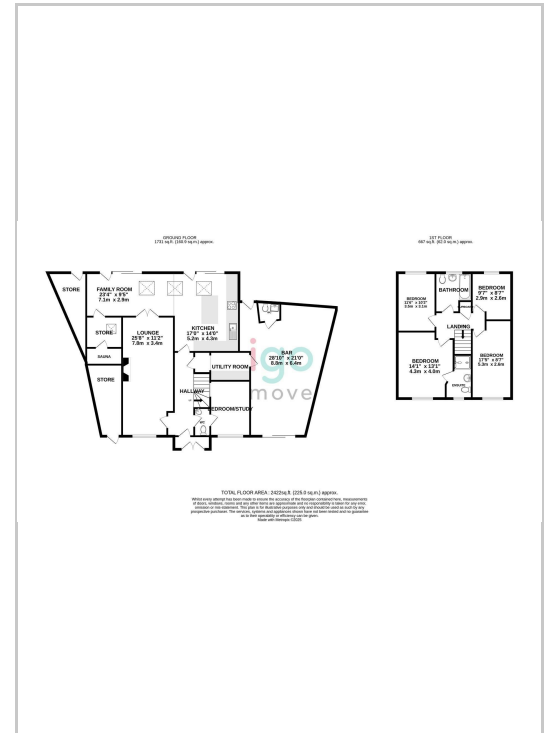
Outdoors there are several storage facilities plus a contemporary, landscaped and capacious, south westerly aspect rear garden with artificial turf, beautiful paving with several well-designed areas offering interest and practicality which include an amazing Finnish log cabin/ BBQ hut with extensive built in seating, natural wood finish inside, there's is a covered dining pergola, several seating areas and hot tub area with established shrubbery which is immaculately manicured, garden shed.

This totally unique property has been transformed beyond all recognition with no expense spared and we have no doubt upon inspection you will be enthralled and impressed in equal measure, we anticipate it will generate a great deal of interest and urge contacting the team at Igomove at your earliest convenience.

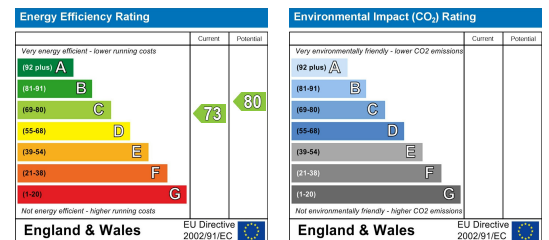
Area Map



Floor Plan



Energy Efficiency Graph



These particulars, whilst believed to be accurate are set out as a general outline only for guidance and do not constitute any part of an offer or contract. Intending purchasers should not rely on them as statements of representation of fact, but must satisfy themselves by inspection or otherwise as to their accuracy. No person in this firm's employment has the authority to make or give any representation or warranty in respect of the property.